

MONTHLY MEMBERSHIP PROGRESS REPORT

District 325 M

Results as of: 11/30/2023

GMT:

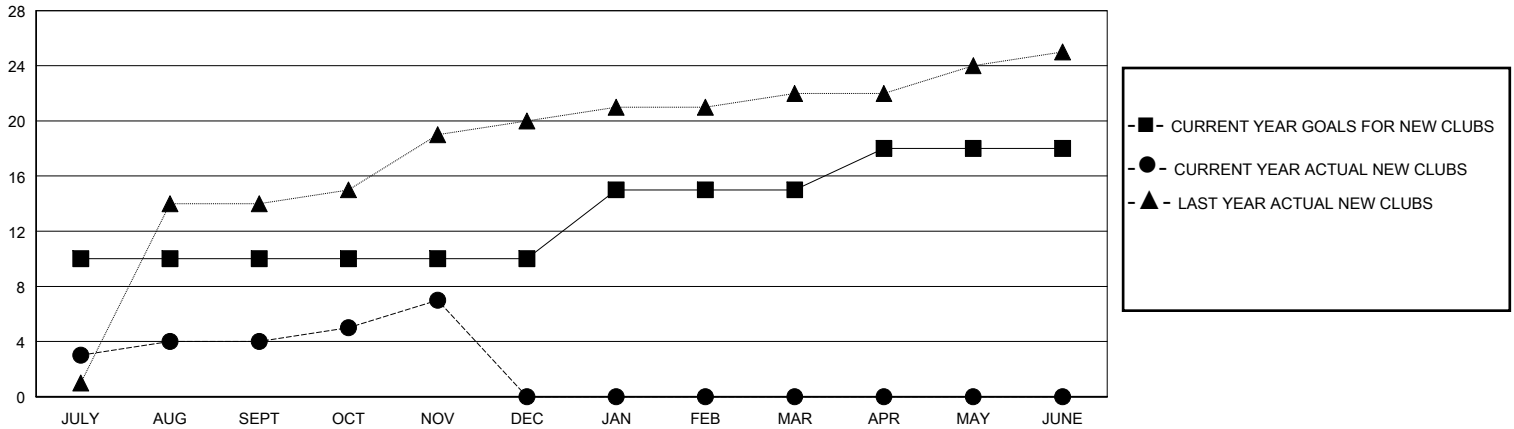
LOCATION NEPAL

GMT CA

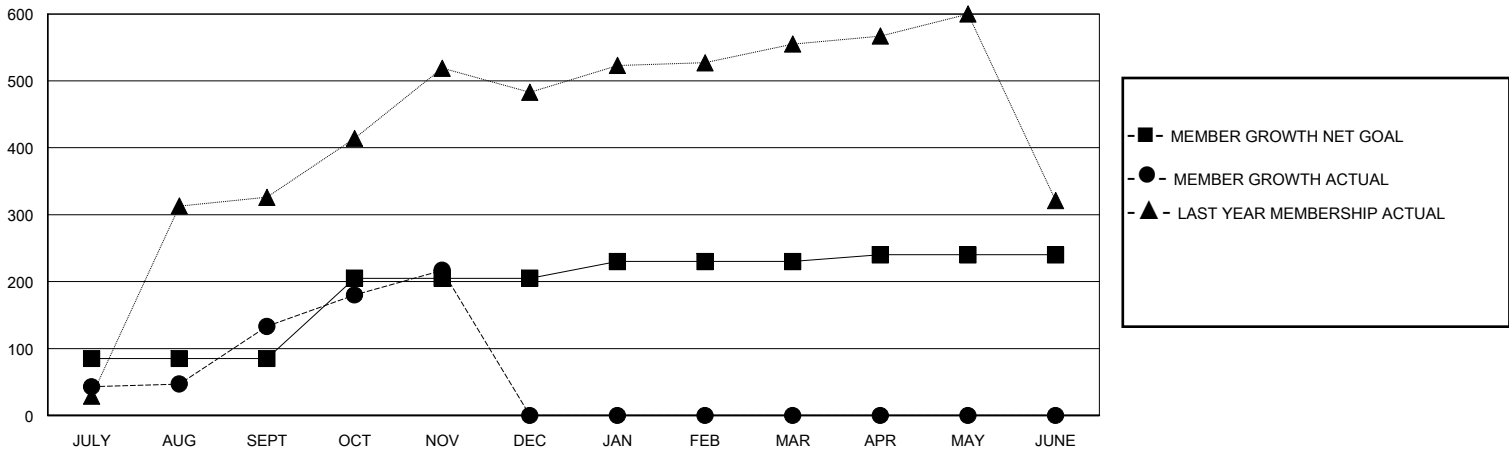
Clubs			
RESULTS FOR 2023-2024			
QUARTER	NEW CLUB GOAL	NEW CLUBS	DROPPED CLUBS
JULY/AUG/SEPT	10	4	3
OCT/NOV/DEC	0	3	0
JAN/FEB/MAR	5	0	0
APR/MAY/JUNE	3	0	0

Members			
RESULTS FOR 2023-2024			
QUARTER	MEMBER GROWTH NET GOAL	MEMBER GROWTH ACTUAL	DROPPED MEMBERS ACTUAL (including transfers)
JULY/AUG/SEPT	85	266	117
OCT/NOV/DEC	120	102	18
JAN/FEB/MAR	25	0	0
APR/MAY/JUNE	10	0	0

GOALS AND ACTUAL NEW CLUBS CUMULATIVE



GOALS AND ACTUAL MEMBERS CUMULATIVE



DROPPED CLUBS: 3	66 CLUBS OF 142 ADDED 1 OR MORE NEW MEMBERS	GENDER DISTRIBUTION	
		MALE 2,183 (68.50%)	FEMALE 1,003 (31.47%)
DROPPED MEMBERS		CLICK HERE FOR CUMULATIVE MEMBERSHIP DATA	TOTAL FAMILY UNIT MEMBERS 3,073
DECEASED 0	CLUB CANCELLED 37		FAMILY MEMBERS PAYING HALF DUES 2,369
OTHER 98	TOTAL 135		